

TEST PROGRAM: READING SMART BATTERY

Objective:

This is primarily used to identify the fuel gauge out-of-calibration that can occur in battery packs that have been in service for some time. Thus further recalibration procedure can be performed if it is needed. It can also be used to evaluate the aging progress of a battery pack by reading the total cycles accumulated throughout the service period before reading.

Procedure and Standard:

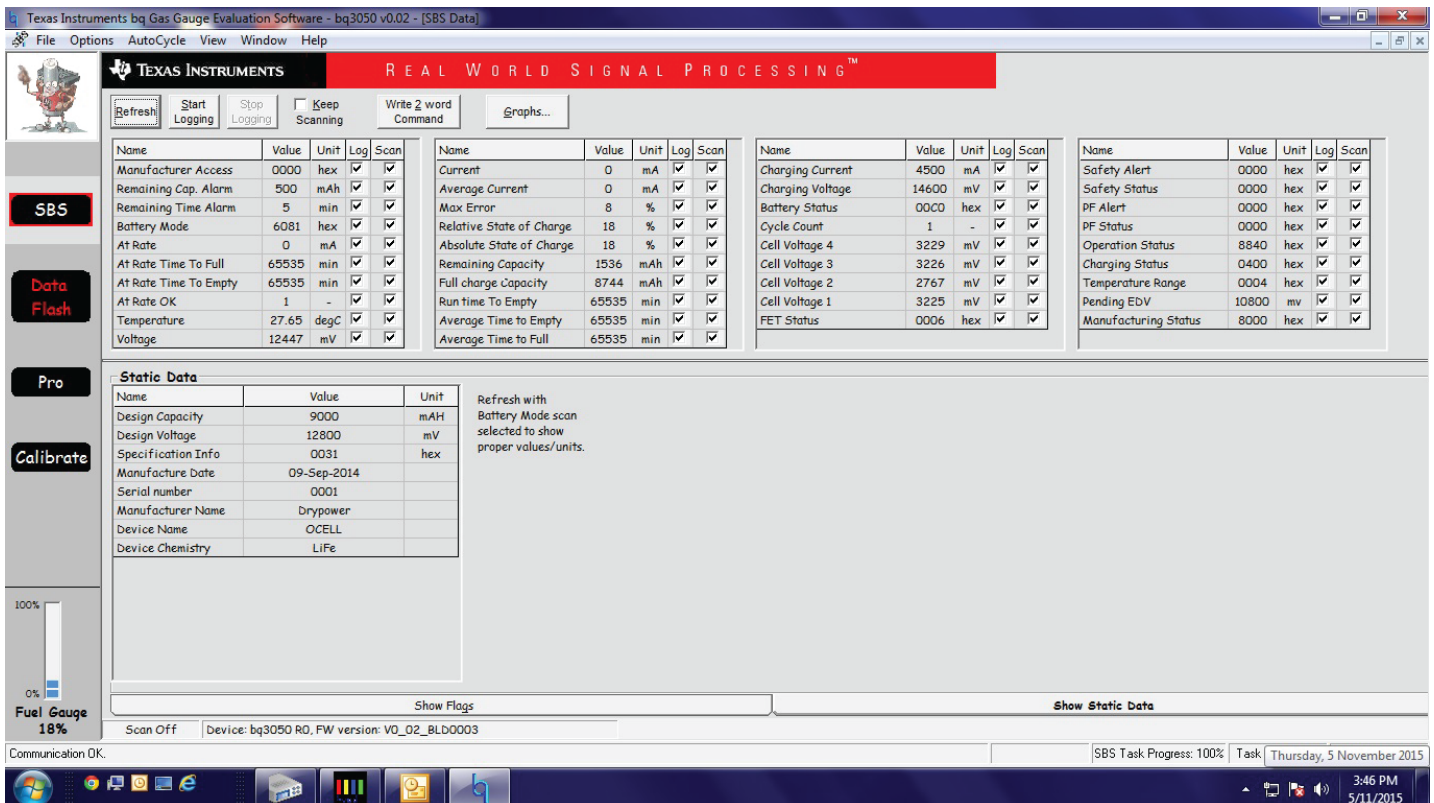
A computer is connected to the battery via an interface unit. A specific software can transfer the relevant information from battery pack onto computer screen in a readable format.

Equipment:

- EV2300 - Texas Instruments
- DS9490R (1-wire USB Port Adaptor) - Maxim Integrated

Result Sample:

The figure below shows a typical reading from EV2300 (Texas Instruments).



TEST PROGRAM: READING SMART BATTERY

Sample Report: DSR9409R (Maxim Integrated)

