

# Optimus all-in-one ESS



## KEY FEATURES



### High Integration

Highly integrated ESS with outdoors cabinet design provides high protection class



### Safe and Reliable

Three level BMS structure for good cooperation and better operation performance



### Flexible

Supports system parallel connection and easy for expansion

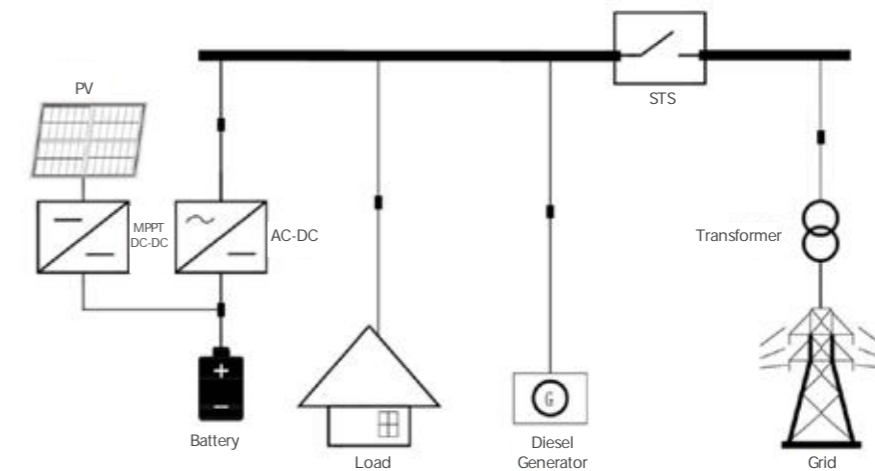


### Pre-Engineered System

Easy for on-site installation and save the cost

## DIAGRAM

Outdoor Cabinet ESS for micro-grid island, hotel, fram... Applications  
 PCS Power optional power range: 30~200KW  
 Battery optional capacity range:100~400KWh  
 Be suitable for 2~4 hours back up



## SPECIFICATION

System Type	Optimus all-in-one ESS
<b>General Data</b>	
Dimension(W*H*D mm)	1450*2000*1100
Weight(Kg)	700
Working Temperature Range ( °C )	-20~60
Protection Class	IP65(battery room)+IP54(PCS room)
Altitude	3000
Humidity	0~95%
Fire Extinguishing	Perfluoro
Air Conditioner	3kW
Anti-Corrosion	C3 (Optional upgrade to C5)
Authentication level	CE/IEC62619/UN38.3/UN3536
<b>Battery Data</b>	
Battery Type	Li-ion (LFP)
Nominal Capacity (kWh)	107
Battery Item	Powercube-M2-180/M3A-100
Battery Module Qty.	19
DC Voltage Range(V)	661~820
Max. Operation Current (A)	148
Efficiency	95%

## SPECIFICATION

System Type	Optimus all-in-one ESS
<b>PCS DC/AC Data On-grid Mode</b>	
Rated AC Power (KW)	60 (expandable to 3*62.5)
Rated AC Output Voltage(V)	400
Rated AC Output Frequency (Hz)	50/60
Max. AC Current(A)	100
Overload Capacity	110%@1min
AC PF	0.8 (leading) -0.8 (lagging)
THDi	< 3%
Isolation Type	Non-isolation
Peak Efficiency	98.5%
<b>PCS DC/AC Data Off-grid Mode</b>	
Output voltage accuracy	< 1%
AC PF	> 0.7
Output voltage distortion factor	< 3%
<b>PV DC/DC Data Parameter</b>	
Rated Power(kW)	30 (expandable to 6*30)
PV Input Voltage(Vdc)	100 – 1000 (full power from 300)
Max. current(A)	100
Max. Efficiency(%)	95.5%
<b>Operation Mode</b>	
On/off-grid Switch	Optional STS module, switching time<20ms
EMS	10 inch LCD Touch Panel Self-Consumption; Micro-grid control; Demand response; Remote Control: Time of use;
Communication Type	Modbus TCP/IP



## Utility ESS



Peak Shifting  
/Multi Purpose



Frequency  
Integration



Renewable  
Regulation