



The future

is coming with sustainable,
smart, stable energy



www.pylontech.com.cn



A Dedicated BESS (Battery Energy Storage System) Provider

Pylontech is a dedicated BESS (battery energy storage system) provider, consolidating expertise in electrochemistry, power electronics, and system integration. We have been providing reliable and affordable ESS battery products

and solutions to the global market and been significantly contributing to a 9-year shipment increasing rate by double, enabling our market position as one of the top suppliers of lithium battery storage world widely.

Follow our Heart-Oriented Always

10+years
Dedication

 **PYLONTECH**



500,000+
Global Residential ESS



10+
Years Delivery Experience



7.34%
R&D Investment



Top 2
Global Residential ESS Supplier



5.5 Gwh+
ESS Battery Delivered



60+
Self-developed Patents



80+countries
Global Deliveries

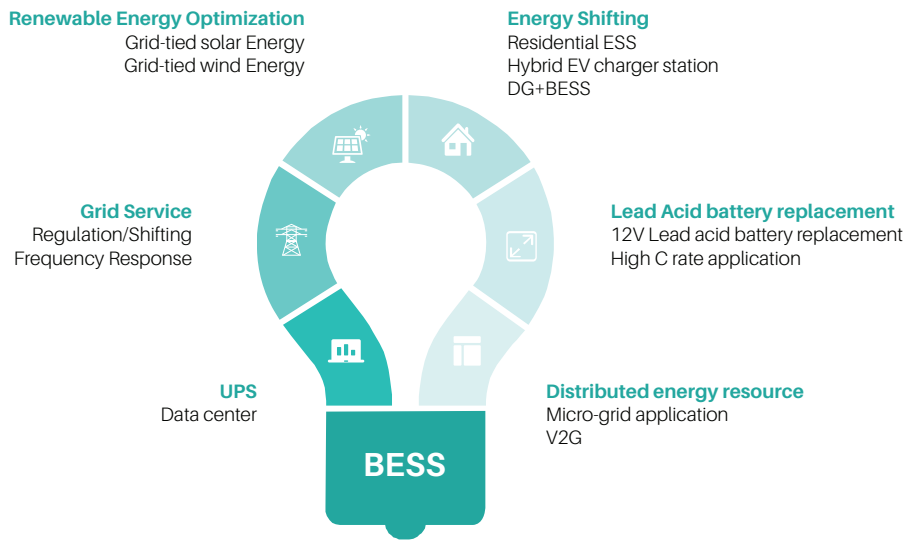


Flexible Battery Solutions
12v~1500v Battery





The road-map of Pylontech BESS



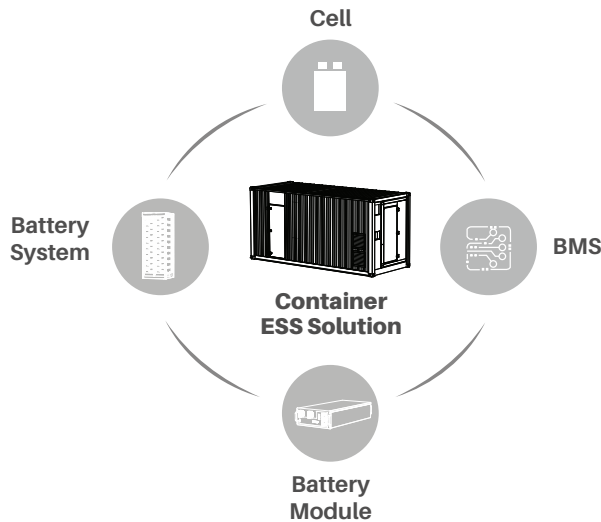
Main Applications



Core Strengths

-  More than 10 years of technology accumulation for reliable BESS
-  The safety and stability of battery are ensured by our own cells, modules and BMS
-  Long life cycle drives R&D, manufacturing, supplying, and marketing
-  Flexible modularization and rack solutions for various demands

Vertical Integration Chain is the **Key** of the performance





Liberating your energy sustainably

Mission |  PYLONTECH

Over the past decade we have been redefining electric power generation, storage and usage with our partners globally. Continuous innovation and broad collaboration is the only route to an

efficient, sustainable and affordable new energy structure. We strongly believe in the carbon neutral commitments from global leaders and strive to contribute our passion into the movement.



DEDICATION



Product Portfolio

01) Portable Power Station

02) Auto Aftermarket

03) Residential BESS

04) UPS Back Up

05) C&I ESS

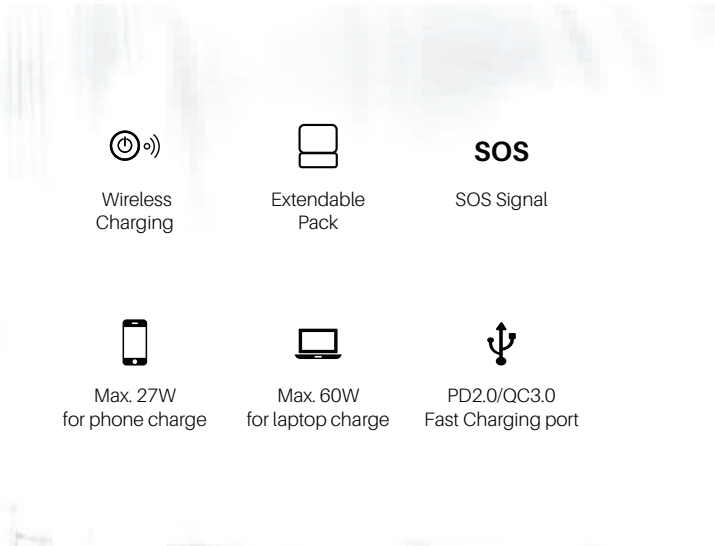
06) Utility ESS

Innovative Portable Power Station

Smart and clean portable power for your demanding devices



Boosting more power with Extendable Battery Pack



SPECIFICATION

Amber Rock



Mini Amber



Nominal Capacity:	473Wh	473Wh
Cell Material:	LFP Lithium Ion	LFP Lithium Ion
Size(mm) :	300*190*160	300*190*94
Weight:	6.4kg	4.7kg
Working temperature:	0~45 C	0~45 C
Shelf Temperature:	-20~60 C	-20~60 C
	2 AC	
	2 USB-A	1 USB-A
Output:	1 USB-C	1 USB-C
	1 Cigar Lighter	
	2 DC jack	
Input:	9hrs full charged-Standard Charger/3hrs full charged-Optional Charger	
Certification:	FCC CE MSDS UN38.3 PSE Rohs	





12V Series

All Purpose Lithium Ion Batteries



Temperature Protection



Over-Voltage Protection



Over-Current Protection



Heating Film



Parallel & Serial Balancing Strategy



Short-circuit Protection

KEY FEATURES

200%

Twice the power of conventional batteries

40%

Weight of the same capacity lead acid battery

4500+

More than 4500+ cycles maximum your ROI

IP67

High level class protection from dust tight and water proof

1C

1C continuous power
2C peak power

-40~60 °C

Wider range of applications in extreme weather

Intelligent Battery Management System (BMS)

Ultra-Safety

BMS provides comprehensive protection to the battery and manages the charging/discharging process wisely.

Auto-Balance

Connects multiple batteries in parallel safely without internal state non-uniformity issues.

Uncompromising Quality

State-of-the-art battery cells ensure a lifespan of more than 4500 cycles.

Communication

CAN, RS485, Blue Tooth and Dry Contact enable data transmission to meet the needs of different usage scenarios.



SPECIFICATION

Model	RT12100G31
Electrical	
Nominal Voltage(V)	12.8
Nominal Capacity(Ah)	100
Working Voltage Range(VDC)	10.8~14.4
Internal Resistance(mΩ)	<20
Charge Voltage(VDC)	14V-14.4
Nominal Operation Current(A)	50
Max. continuous operation current(A)	100
Peak Current(A)	200@30sec
Serial Connection	≤ 4 pcs
Parallel Connection	≤ 4 pcs
Structure	
Dimension (mm)	325*173.5*226
Weight(Kg)	13±0.2
IP rating	IP67
Power Terminal	M8 bolt
Working Environment	
Charge working temperature (°C)	0~60
Discharge working temperature (°C)	-20~60
Working temperature (°C)	-40~60*
Altitude (M)	<4,000
Humidity(RH)	5~95% (w/o condensing)
Communication	
RS485	115200bps
CAN	500Kbps
Bluetooth	BLE5.0
Dry contactor	2×inputs & 2×outputs
Certification	
SAE J930, SAE J1455, UL1973, IEC62619,FCC,CE, Bluetooth SIG, UN38.3	

During -40°C ~ -20°C, only heater will be enabled for heating up the module. Battery cannot be charged /discharged in such temperature range.





24V Back-Up Storage System

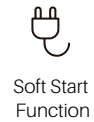


APPLICATION

Back-up system for office computers, data centers, load, and other equipment of business buildings, banks, hospitals, schools, railway stations, airports, telecom, etc.



KEY FEATURES

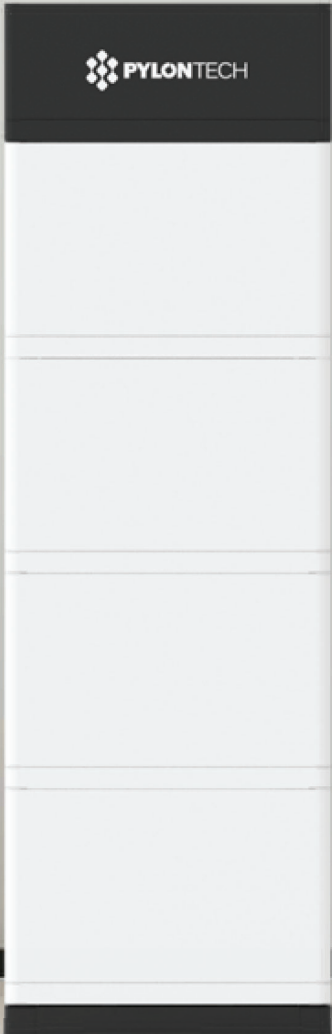


SPECIFICATION

Basic Parameters	UP2500
Nominal Voltage(V)	25.6
Nominal Capacity(Wh)	2840
Usable Capacity(Wh)	2550
Dimension(W*D*H, mm)	442*420*120
Weight(Kg)	26.5
Discharge Voltage(V)	23.2~28.5
Charge Voltage(V)	28.2~28.5
Charge/Discharge Current(A)	55(continuous) 100 (Peak@15s)
Communication Port	CAN,RS485
Working Temperature(C)	0~50
Shelf Temperature(C)	-20~60
Humidity	5%~90%
Altitude (m)	<2000
Design Life	15+Years (25°C@77 °F)
Cycle Life	>6000, @25 C
DOD	90%
Authentication level	IEC62619/CE/RoHS/UN38.3

Residential BESS

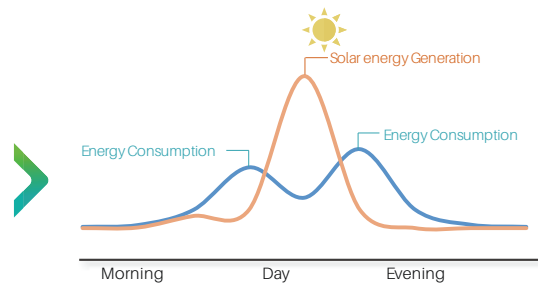
Save on your bill, save the world, with our battery storage.
Little step for our generations to enjoy the safe and clean environment.



How to save on bill from Residential ESS?

Self-Consumption Optimization

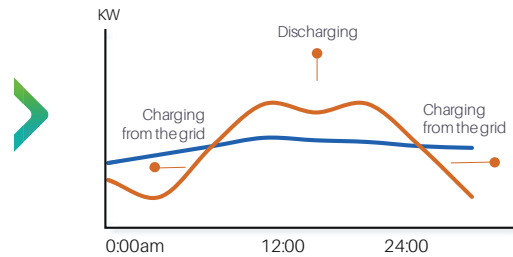
High energy demand in the morning and evening but solar energy generation is most sufficient during the Mid-Day. Battery Storage system balance the feeding and demands. Realize your grid independence.



Benefits from Peak Shaving

House: Load Shifting

Store the power during off-peak and use the energy at peak-time. Save on the electricity bills by reducing peak demand.



VPP Revenue

VPP creates a network of renewable energy sources and battery storage systems, connected through a cloud-based technology that manages the stability of clean electricity to maximize your revenue.

Enabling a cost reduction, as well as boosting the system's efficiency



Your ideal Residential BESS



Safety

Multi-protection from self developed BMS



Optimal Electricity Cost

Long cycle life and superior performance



Compact Size & Easy installation

Module design help for quick installation



Easy to Scale Up

Be workable to be parallel based on 48V



Compatibility

Compatible with Tier 1 inverter brands



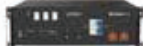


Complete Safety Certification

Product Lineup

48 V		96~336 V
Cabinet/rack installation	Quick connector	Quick connector
US2000C (2.4 kWh)	Force L1 (7.1~24.86 kWh)	Force H1 (10.65~24.86 kWh)
Phantom-S(2.4 kWh)	Force L2 (7.1~14.2 kWh)	Force H2 (7.1~14.2 kWh)
US3000C (3.55 kWh)		
US5000 (4.8 kWh)		

SPECIFICATION (48V)

Model	 US2000C	 US3000C	 US5000B
Basic Parameters			
Nominal Voltage (Vdc)	48	48	48
Nominal Capacity(Wh)	2400	3552	4800
Usable Capacity(Wh)	2280	3374	4560
Dimension(mm)	442*410*89	442*420*132	442*420*161
Weight(kg)	24	32	39.7
(Recommend)	25	37	80
Charge/Discharge Current(A)			
(Max)	89@1min	89@1min	120@15min
(Peak)	200@15sec	200@15sec	200@15sec
Communication Port		RS485, CAN	
Single string quantity(pcs)	16	16	16
Working Temperature/ °C		0~50	
Shelf Temperature/ °C		-20~60	
Cycle Life	>6000, 25 °C	>6000, 25 °C	>6000, 25 °C
Authentication Level	IEC62619/CE UN38.3	VDE2510-50 IEC62619/UL1973 UL9540A/CE/UN38.3	IEC62619/UL1973 /UL9540A/CE /UN38.3



Force Series

Behind the steel color stands the strong capability of holding energy. Sleek and furniture-like design suits both indoor and outdoor installation. Ideal for large home and small commercial application.

7.10~24.86 kWh

Flexible Mounting

Plug&Play

95% DOD

SPECIFICATION (Force-L1/48V)



Model	2	3	4	5	6	7
Basic Parameters						
Battery System Capacity(kWh)	7.1	10.65	14.21	17.76	21.31	24.86
Voltage Range(Vdc)	43.5~54					
Dimension(W*D*H mm)	600*380*530	600*380*700	600*380*870	600*380*1040	600*380*1210	600*380*1380
Weight(kg)	86.5	123	159.5	196	232.5	269
Depth of Discharge	95%					
(Recommend)	30	45	60	75	90	100
Charge/Discharge Current(A)						
(Max)	75	100	100	100	100	100
(Peak @15s)	105	105	105	105	105	105
Communication Port	RS485, CAN					
Protection Class	IP55					
Working Temperature/ °C	0~50					
Shelf Temperature/ °C	-20~60					
Humidity	5%~95%(w/o condensing)					
Altitude	<2000					
Design Life	15+ Years (25 °C /°F)					
Cycle Life	>6000, 25 °C					
Authentication level	VDE2510-50/IEC62619/IEC62477/IEC62040/CE/UN38.3					

SPECIFICATION (Force-L2/48V)



Model	2	3	4
Basic Parameters			
Battery System Capacity(kWh)	7.1	10.65	14.21
Voltage Range(Vdc)	43.5~54		
Dimension(W*D*H mm)	450*296*822	450*296*1120	450*296*1415
Weight(kg)	82	117.5	153
Depth of Discharge	95%		
(Recommend)	30	45	60
Charge/Discharge Current(A)	75	100	100
(Peak @15s)	105	105	105
Communication Port	RS485/CAN		
Protection Class	IP55		
Working Temperature/ °C	0~50		
Shelf Temperature/ °C	-20~60		
Humidity	5%~95% (w/o condensing)		
Altitude	< 2000		
Design Life	15+ Years (25 C /°F)		
Cycle Life	>6000, 25 C		
Authentication level	VDE2510-50/IEC62619/IEC62477/IEC62040/CE/UN38.3		

SPECIFICATION (96~336 V)



Basic Parameters	Force-H1	Force-H2
Battery Module	FH48074	FH9637M
Battery Module Voltage(Vdc)	48	96
Battery Module Capacity(Ah)	74	37
Battery Module Qty. (Optional)	3~7 pcs	2~4 pcs
Battery System Capacity(kWh)	24.86	14.20
Battery System Voltage (V)	336	384
Dimension (W*D*H mm)	600*380*1380	450*296*1414
Weight(kg)	259	155
Depth of Discharge	95%	
Charge/ Discharge Current(A)	(Recommend) 37	18.5
	(Max.) 40	
Communication Port	RS485, CAN	
Protection Class	IP55	
Working Temperature/ °C	0~50	
Shelf Temperature/ °C	-20~60	
Humidity	5%~95%(w/o condensing)	
Altitude	< 2000	
Design Life	15+ Years (25 °C /°F)	
Cycle Life	>6000, 25 °C	
Authentication level	UL1973/VDE2510-50 /IEC62619/IEC62477/ IEC62040/CE/UN38.3	VDE2510-50/IEC62619 /IEC62477/ IEC62040 /CE/UN38.3

PELIO



Smaller Footprint

higher energy density benefit from latest LFP technology



Expandable

Modular design
Maximum 20*5.12kwh



High Power Efficiency

Continuous power 5.12kw
Peak power 6.14kw@15min
Peak power 10.24kw@15sec



Monitor 24/7

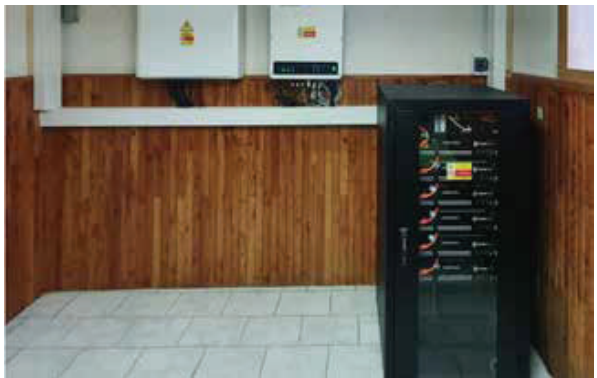
Real-time monitoring of battery charging and discharging, online system updates and maintenance



SPECIFICATION (Pelio-L-5.12)

Basic Parameters	Pelio-L-5.12
Nominal Voltage (V)	51.2
Nominal Capacity (Wh)	5120
Usable Capacity (Wh)	4864
Dimension (mm)	395*578*165
Weight (Kg)	45
Discharge Voltage (V)	44.8 ~ 56.8
Charge Voltage (V)	56.0 ~ 56.8
Recommend Charge/Discharge Current (A)	80
Max. Charge/Discharge Current (A)	100~120@15min
Peak Charge/Discharge Current (A)	120~200@15sec
Communication Port	RS485, CAN
Operation&Connection	WIFI*(2.4G), USB 2.0
Depth of discharge (%)	95
Configuration (max. in 1 battery group)	20pcs
Working Temperature	0°C ~50°C Charge -10°C ~50°C Discharge
Shelf Temperature	0°C ~40°C (6 months) -20°C ~45°C (3 months)
Short current/duration time	<4000A/2ms
Cooling type	Natural
Protective class	I
IP rating of enclosure	IP65
Humidity	5% ~ 95%(RH) No Condensation
Altitude(m)	<4000
Design life	15+ Years (25 C/77 F)
Cycle Life	>6,000 25 C
Reference to standards	IEC62619, IEC63056, IEC62040, IEC62477-1, UL1973, U1642,UL9540A, VDE2510-50, IEC61000-6-2, IEC61000-6-3, UN38.3

Pylontech
had been serving Over **500,000+**
Residential ESS globally from 2014





OUR RELIABILITY IS PROVEN

Helping You **Stay connected...**

LiPower UPS Battery

Ideal backup power solution to meet your demands.
Reserve power you can always rely on.



Data center



Bank



Public Utilities



Features

- ◆ Master BMS support Modbus RTU, CANBUS, Dry contactor communication;
- ◆ BMS support neutral connection (+&- Vdc);
- ◆ Internal & External power supply dual back-up;
- ◆ Dual back-up of discharge circuit;
- ◆ Independent control of discharge circuit, even charge circuit failure discharge still available;
- ◆ Automatic Insulation Detection ;
- ◆ Pre-charge circuit;
- ◆ Operation Reliability 99.999%;

SPECIFICATION

Basic Parameters	LiPower-U4
Cell Technology	Li-ion (LFP)
Battery System Capacity (kWh)	56.8
Battery System Voltage (Vdc)	512
Battery System Capacity(Ah)	111
Battery Controller Name	S0700U400
Battery Module Name	HLP111-400
Battery Module Quantity (pcs)	10
Battery Module Voltage(Vdc)	51.2
Battery Module Capacity(Ah)	111
Battery System Charge Upper-Voltage(V)	568
Battery System Charge Current-Max.(A)	111
Battery System Discharge lower-Voltage(V)	424
Battery System Discharge Current-Max. (A)	400
Efficiency	1P ≥95%; 2P ≥92%; 3P ≥88%
Depth of Discharge	95%
Operation Life	15+years
Operation Cycle Life	>3,000
Communication Port	Modbus RTU/CAN/Dry Contactor
Protection Class	IP20
Weight (kg)	580
Operation Temperature(°C)	-5~60 (ideal 20 - 30)
Storage Temperature(°C)	-20~45
Battery Module Dimensions (W*D*H mm)	442*600*152
Battery Controller Dimensions(W*D*H mm)	442*600*250
Battery System Dimensions(W*D*H mm)	600*800*2200
Authentication Level	IEC62619/IEC63056/IEC62040-1/IEC72477-1/ CE EMC/CE LVD/UN38.3

Dedicated Commercial & Industrial ESS



Self-Consumption



Demand Charge



Micro-grid



Off grid



DG+BESS



V2G



Back Up



Peak Shifting



Battery

storage systems have been proven to be “extremely lucrative” for commercial and industrial (C&I) field.

SPECIFICATION

Battery Module



Basic Parameters	H48050	H48074	H32148-C
Energy (kWh)	2.4	3.55	4.74
Nominal Voltage(V)	48	48	32
Battery Capacity(Ah)	50	74	148
Voltage range(V)	45~54	45~54	30~36
Dimension (W*D*H mm)	442*390*100	442*390*132	330*628*150.5
Weight(kg)	24	32	48

Powercube X series
100~600V



Basic Parameters	Powercube X1 (336V50Ah)	Powercube X2 (336V74Ah)
Battery Module	H48050	H48074
Battery System Capacity(kWh)	16.8	24.9
Battery system Voltage(V)	336	336
Battery System Voltage Range (V)	315~378	315~378
Efficiency(@0.5C-rate)	96%	96%
Depth of Discharge	95%	95%
Dimension (W*D*H mm)	600*505*1300	600*505*1380
Weight(kg)	275	330
Design Life	15+Years	15+Years
Operation Temperature (C)	0~50	0~50
Humidity	5%~95%	5%~95%
Altitude	<2000	<2000
Battery Module Qty.(Optional)	2~10	2~10
Authentication level	IEC62619/VDE2510-50/UL1973/CE/CEC	

SPECIFICATION

Powercube H series
200~1000V



Basic Parameters	Powercube-H1 (720V50Ah)	Powercube-H2 (576V74Ah)
Battery Module	H48050	H48074
Battery System Capacity(kWh)	36	42.62
Battery system Voltage(V)	720	576
Battery System Voltage Range (V)	664~810	531~648
Efficiency(@0.5C-rate)	96%	96%
Depth of Discharge	95%	95%
Dimension (W*D*H mm)	600*505*2130	600*505*2130
Weight(kg)	400	450
Design Life	15+Years	15+Years
Operation Temperature (C)	0~50	0~50
Humidity	5%~95%	5%~95%
Altitude	<2000	<2000
Battery Module Qty.(Optional)	5~15 pcs	5~12 pcs
Authentication level	IEC62619/VDE2510-50/ UL1973/CE/CEC	IEC62619/UL1973/CE

Powercube M1C
100~1000V



Basic Parameters	Powercube-M1C (736V148Ah)
Battery Module	H32148-C
Battery System Capacity(kWh)	108.93
Battery system Voltage(V)	736
Battery System Voltage Range (V)	621~828
Efficiency(@0.5C-rate)	96%
Depth of Discharge	90%
Dimension (W*D*H mm)	815*659*2130
Weight(kg)	1250
Design Life	15+Years
Operation Temperature (C)	10~40
Humidity	5%~95%
Altitude	<2000
Battery Module Qty.(Optional)	1~23 pcs
Authentication level	IEC62619/IEC63056/UL1973/UL9540A/ VDE2510-50/CE/UN38.3

Optim US all-in-one ESS



KEY FEATURES



High Integration

Multi-use scenario benefits from the of highly integrated ESS and high-level protection outdoor cabinet design



Safe and Reliable

Self-developed BESS for a high degree of safety and reliable performance



Flexible

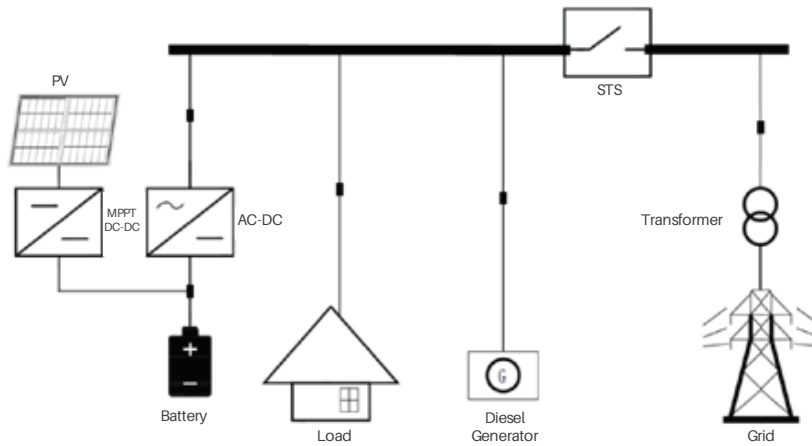
Supports system parallel connection and easy for expansion



Pre-Engineered System

Easy for on-site installation and save the cost

Outdoor Cabinet ESS for micro-grid island, hotel, farm... Applications
 PCS Power optional power range: 30~200KW
 Battery optional capacity range: 100~400KWh
 Be suitable for 2~4 hours back up



SPECIFICATION

System Type	Optim US-B1-100
General Data	
Dimension(W*H*D mm)	1500*2320*1107.5
Weight(Kg)	2600 (incl. battery)
Working Temperature Range (°C)	-20~60
Protection Class	IP54
Altitude	3000
Humidity	0~95%
Fire Extinguishing	Perfluoro
Air Conditioner	2kW
Anti-Corrosion	C3 (Optional upgrade to C5)
Authentication level	CE/IEC62619/UN38.3/UN3536
Battery Data	
Battery Type	Li-ion (LFP)
Nominal Capacity (kWh)	113.7
Battery Item	Powercube-M1C
Battery Module Qty.	24
DC Voltage Range(V)	696~864
Max. Operation Current (A)	148
Efficiency	95%

SPECIFICATION

System Type	Optim US-B1-100
PCS DC/AC Data On-grid Mode	
Rated AC Power (KW)	60 (expandable to 4*60)
Rated AC Output Voltage(V)	400
Rated AC Output Frequency (Hz)	50/60
Max. AC Current(A)	86
Overload Capacity	110%@1min
AC PF	0.8 (leading) ~0.8 (lagging)
THDi	≤ 3%
Isolation Type	Non-isolation
Peak Efficiency	98.5%
Unbalanced capacity	100%
PCS DC/AC Data Off-grid Mode	
Output voltage accuracy	≤ 1%
Unbalanced capacity	100%
Voltage harmonic distortion	< 2% @line load
Overload capacity	≤ 110%
PV DC/DC Data Parameter	
Rated Power(kW)	60 (expandable to 4*60)
PV Input Voltage(Vdc)	200 – 850
Max. current(A)	100
Max. Efficiency(%)	98.5%
Operation Mode	
On/off-grid Switch	Optional STS module, switching time<20ms
EMS	10 inch LCD Touch Panel Self-Consumption; Micro-grid control; Demand response; Remote Control; Time of use;
Communication Port	Modbus TCP/IP

Utility ESS



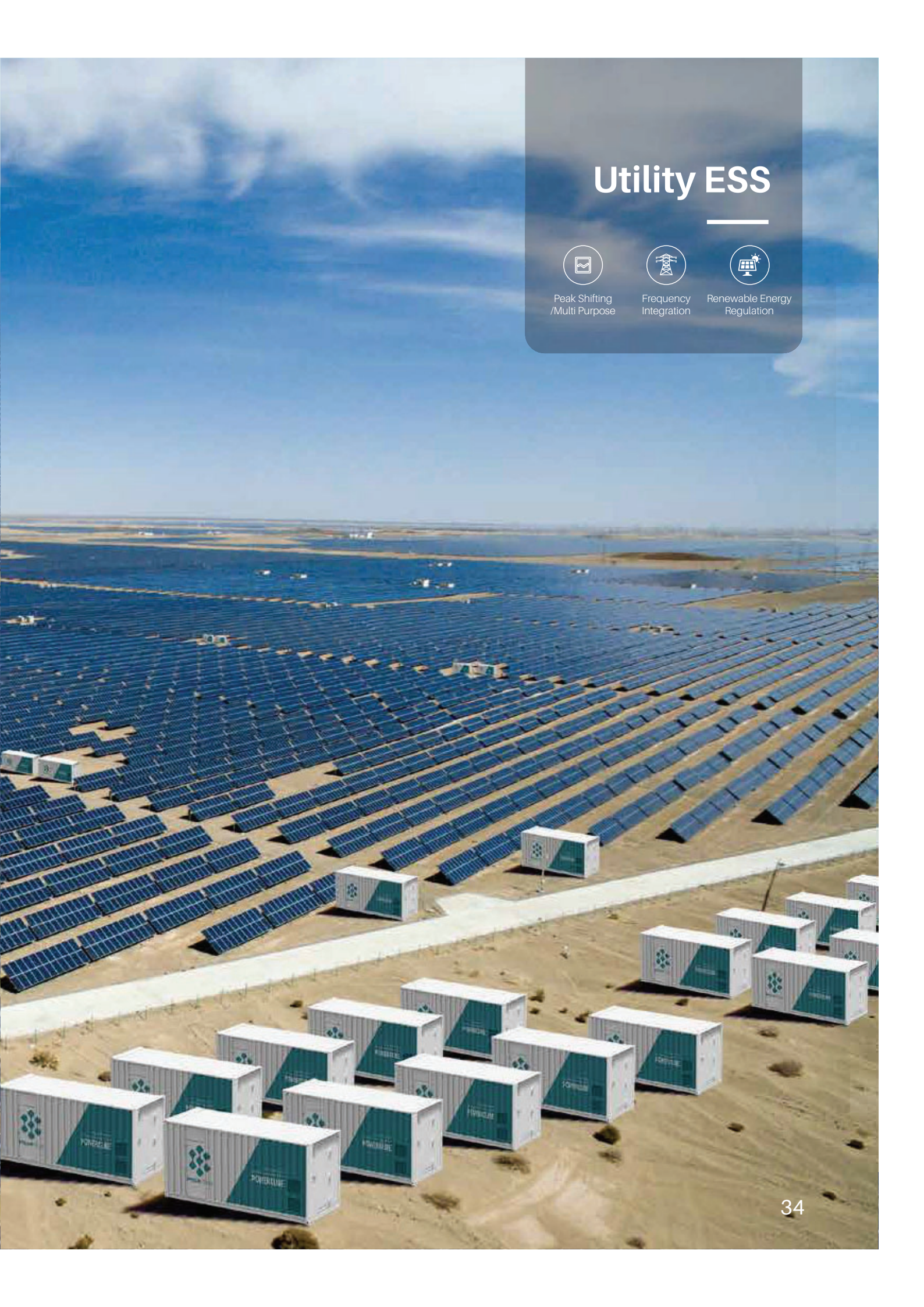
Peak Shifting
/Multi Purpose



Frequency
Integration



Renewable Energy
Regulation



SPECIFICATION

Powercube M2
100~1000V



Basic Parameters	Powercube-M2A-180 (729.6V148Ah)
Battery System Capacity(kWh)	107.98
Battery Module	HM2A180
Battery system Voltage(V)	729.6
Battery System Voltage Range (V)	615.6~820.8
Efficiency(@0.5C-rate)	96%
Depth of Discharge	90%
Dimension (W*D*H mm)	803*845*2130
Weight(kg)	1228
Design Life	15+Years
Operation Temperature (C)	10~40
Humidity	5%~95%
Altitude	< 2000
Battery Module Qty.(Optional)	1~ 19 pcs
Authentication level	IEC62619/CE/UN38.3

Powercube M3
100~1400V



Basic Parameters	Powercube-M3A-100 (729.6V148Ah)	Powercube- M3A-180 (1113.6V148Ah)
Battery Module	HM3A100	HM3A180
Battery System Capacity(kWh)	107.98	164.81
Battery system Voltage(V)	729.6	1113.6
Battery System Voltage Range (V)	615.6~820.8	939.6~1252.8
Efficiency(@0.5C-rate)	96%	96%
Depth of Discharge	90%	90%
Dimension (W*D*H mm)	803*845*2130	1185*845*2130
Weight(kg)	1228	1798
Design Life	15+Years	15+Years
Operation Temperature (C)	10~40	10~40
Humidity	5%~95%	5%~95%
Altitude	<2000	<2000
Battery Module Qty.(Optional)	1~ 19 pcs	1~29 pcs
Authentication level	UL1973/IEC62619/CE /UN38.3/UL9540A	IEC62619/VDE2510-50 /CE/UN38.3

SPECIFICATION



Basic Parameter	20ft High Voltage System Container		40ft High Voltage System Container	
Container System Type	Powercube-20H-M1		Powercube-40H-M1	
System Charge/Discharge Rate	0.5C		0.5C	
System Voltage Range(V)	736(690~828)		736(690~828)	
System Capacity(kWh)	1296		2592	
Container System Type	Powercube-20H-M2		Powercube-40H-M2	
System Charge/Discharge Rate	0.5C	0.5C	0.5C	0.5C
System Voltage Range(V)	806(680~907)	1228(1036~1382)	806(680~907)	1228(1036~1382)
System Capacity(kWh)	1432	1454	2983	3273
Container System Type	Powercube-20H-M3		Powercube-40H-M3	
System Charge/Discharge Rate	0.5~1C	0.5~1C	0.5~1C	0.5~1C
System Voltage Range(V)	806(680~907)	1228(1036~1382)	806(680~907)	1228(1036~1382)
System Capacity(kWh)	1194	1091	2625	2546
Dimension (L*W*H, M)	6.058*2.438*2.896		12.192*2.438*2.896	
Ambient Temperature (°C)	-20 ~ 50			
Communication Port	CANBUS/Modbus TCP/IP			



GLOBAL DELIVERY



BEIJI Island CHINA | 1.2MW/2.65MWH | Micro-grid Self-consumption /Back-up ESS PV+DG+BESS



SHANGHAI CHINA | 1MW/2MWH | IDC UPS Back Up Grid+BESS



URUGUAY SOUTH AMERICA | 500KW/750KWH | Micro-grid Self-consumption ESS PV+BESS



USA | 1MW/2.MWH | Self-consumption/Back-up Commercial ESS PV+Grid+BESS



GERMANY 1MW/2.5MWH | Peak Shaving Arbitrage
Grid service ESS
Grid+ESS



SENDAI JAPAN 250KW/540KWH | Micro-grid Self-consumption
Commercial ESS
PV+DG+BESS



MADAGASCAR 500KW/1.5MWH | Micro-grid
Self-consumption ESS
PV+DG+BESS



SOUTH EAST ASIA 50KW/624KWH | Micro-grid
Self-consumption ESS
PV+DG+BESS



A Dedicated BESS (Battery Energy Storage System) Provider

Pylon Technologies Co., Ltd
No. 71-72, Lane 887, Zu Chongzhi Road,
Zhangjiang Hi-Tech Park Pudong, Shanghai 201203, China

www.pylontech.com
sales@pylontech.com.cn



PY221107EN-SD